

UM10044

ISP1183 Low-Power USB Peripheral Controller PC Eval Kit

Rev. 03 — 21 October 2004

User manual

Document information

Info	Content
Keywords	isp1183, universal serial bus, usb
Abstract	This document explains the ISP1183 PC eval kit.

Revision history

Rev	Date	Description
03	20041021	Third release; updated the schematics.
02	20041018	Second release; updated Table 1: . Updated terminology from “device PC” to “peripheral PC”, and “interface device” to “peripheral controller”.
01	20030930	First release.

Contact information

For additional information, please visit: <http://www.semiconductors.philips.com>

For sales office addresses, please send an email to: sales.addresses@www.semiconductors.philips.com

1. Introduction

The ISP1183 is a cost- and feature-optimized USB peripheral. It is typically used in any microcontroller- or microprocessor-based system. The ISP1183 is a full-speed USB Peripheral Controller with up to 14 configurable endpoints. It has a fast general-purpose parallel interface for communication with many types of microcontrollers or microprocessors.

The ISP1183 has 2462 bytes of internal FIFO memory, which is shared among the enabled USB endpoints. The type and FIFO size of each endpoint can be individually configured, depending on the required packet size. For increased data throughput, isochronous and bulk endpoints are double-buffered.

To a microcontroller, the ISP1183 appears as a memory device with an 8-bit data bus and a 1-bit address bus. The ISP1183 only supports a nonmultiplexed address and data bus.

The ISP1183 PC evaluation (eval) kit uses two PCs as a complete USB development environment—a host PC with USB host capability and a peripheral PC running the ISP1183 firmware. The ISP1183 eval board is plugged in the peripheral PC as a USB peripheral.

With this setup, you can easily evaluate ISP1183's features, and develop firmware and product prototype, without being limited by the choice of a microcontroller. The firmware is written in C, that supports Borland Turbo C for x86.

[Fig 1](#) shows the ISP1183 evaluation (eval) board.



Fig 1. ISP1183 eval board.

2. System requirements

For the host PC:

- PC with USB motherboard or add-on card.
- Microsoft® Windows® 98 and Windows 2000.

For the peripheral PC:

- PC with Microsoft DOS 6.x.
- ISP1183 eval board, as shown in [Fig 2](#).

For the firmware development:

- x86 CPU platform: Borland Turbo C++ 3.0 or above.

- ISP1183 eval diskette.

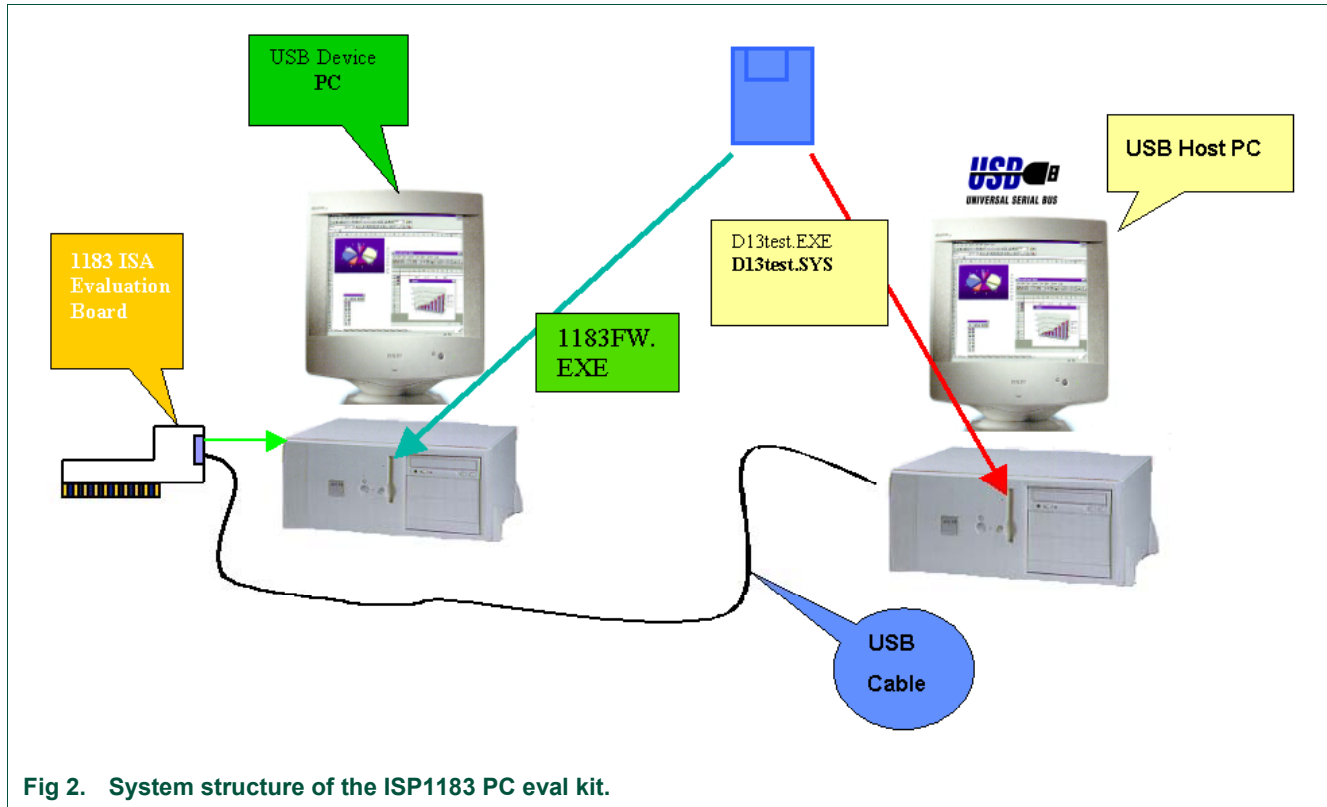


Fig 2. System structure of the ISP1183 PC eval kit.

3. Jumper settings on the ISP1183 eval board

The ISP1183 eval board is plugged into the peripheral PC. It will occupy I/O and IRQ resources of the peripheral PC. To avoid possible conflicts in settings, remove all the unnecessary cards from the peripheral PC. Sound cards and network cards may cause IRQ conflicts.

Jumper JP1 enables and disables the level-shift module.

Table 1: JP1

Isolate data bus	Disable	Enable (default)
Short pins	1–2	2–3

JP2 sets the I/O power supply of the eval board. Default setting is 1.8 V.

Table 2: JP2

I/O voltage select	1.8 V (default)	3.3 V
Short pins	1–2	2–3

JP4 sets the IRQ number for the ISP1183 eval board. Default setting is IRQ5 as shown in [Table 3](#). Short Intx_IRQ and pin 5.

Table 3: JP4

IRQ number	IRQ5 (default)	IRQ3	IRQ4	IRQ6	IRQ7
Short pins	5–Intx_IRQ	3–Intx_IRQ	4–Intx_IRQ	6–Intx_IRQ	7–Intx_IRQ

Jumper JP5 is reserved (left open).

Table 4: S2

MCU power supply	5 V (default)	3.3 V
Short pins	1–2	2–3

Table 5: S4

Board power supply	Bus-powered	Self-powered (default)
Short pins	1–2	2–3

Table 6: S5

V _{BUS} power supply	Bus-powered (default)	Self-powered
Short pins	1–2	2–3

Table 7: Possible conflict settings

IRQ number	Possible conflict
IRQ5	Creative SoundBlaster™ and compatible sound cards always occupy this IRQ, by default. If this type of sound card is installed, check its settings or remove it. Some network cards may also use this IRQ.
IRQ7	Used by parallel port, by default. May cause printing problem on peripheral PC.

4. I/O mapping

The ISP1183 eval board occupies eight I/O locations. The base address is 0x368.

Table 8: I/O mapping

Offset	Usage
0	ISP1183 data register, read or write
1	Write command register, read data bus state
2	Board control and read chip I/O state
3	Reserved
4 to 7	Reserved for expansion board

5. Installing hardware, firmware, INF and driver

The procedure to install hardware, firmware, INF and driver is as follows:

1. Switch off the peripheral PC.
2. Remove all unnecessary cards on the peripheral PC.
3. Plug the ISP1183 eval board in the ISA slot of the peripheral PC.
4. Switch on the peripheral PC.
5. On the peripheral PC, under the DOS mode, run firmware 1183FW.EXE.

If it is the first time that the eval board is connected to the host PC, the host OS Device Manager will prompt for the installation of INF and drivers.

6. Select the location of D13TEST.INF and D13TEST.SYS from the ISP1183 evaluation diskette and complete the installation procedure.

6. Using the host applet

The test applet, D13TEST.EXE, exercises all ISP1183 endpoints as shown in [Fig 3](#).

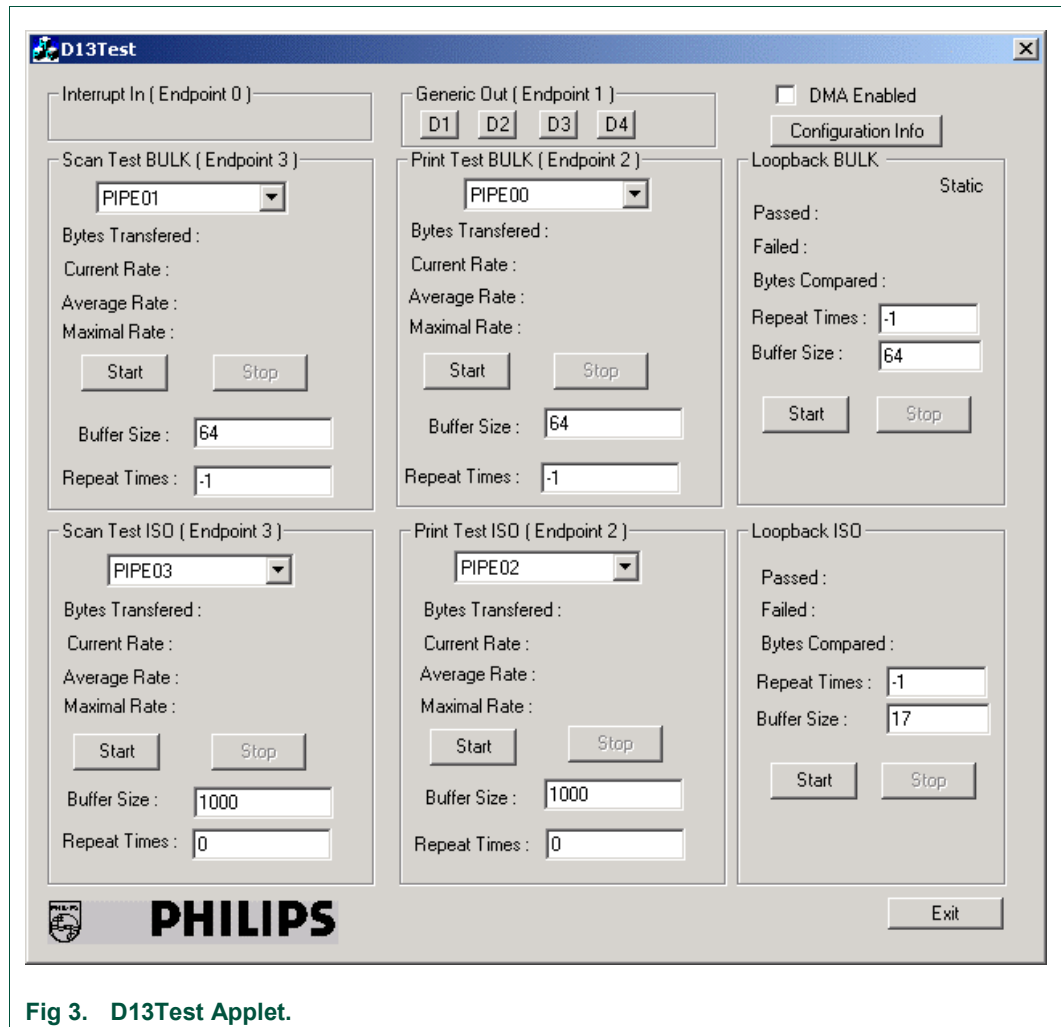


Fig 3. D13Test Applet.

[Table 9](#): shows a description of endpoints operation on the ISP1183 eval board.

Table 9: Description of endpoints operation

The test applet and the ISP1183 eval board support three test modes: loopback, print and scan. The firmware uses I/O accesses on this endpoint.

Endpoint number	Endpoint type	Operations
5	ISO-OUT	This pipe is defined as isochronous OUT pipe.
6	ISO-IN	This pipe is defined as isochronous IN pipe.
3	Bulk-OUT	This pipe is defined as bulk OUT pipe. Supports DMA.
4	Bulk-IN	This pipe is defined as bulk IN pipe. Supports DMA.

Three test modes:

- **Scan mode:** In this mode, the ISP1183 eval board acts like a scanner. It sends data packets to the host PC as fast as possible. Use this mode to evaluate the isochronous IN and bulk IN transfer rates.

- **Print mode:** In this mode, the ISP1183 eval board acts like a printer. It receives data packets from the host PC as fast as possible. Use this mode to evaluate the isochronous OUT and bulk OUT transfer rates.
- **Loopback mode:** In this mode, the ISP1183 eval board receives data packets on the isochronous OUT (or bulk OUT) endpoint and sends them back to the host PC on isochronous IN (or bulk IN) endpoint. Use this mode to test the data integrity of transfers.

The Buffer Size setting on the test applet is determined by the firmware and hardware ability of the eval board. For the ISA mode, the maximum size is limited to 64000 bytes for the bulk transfer and 256 bytes for the ISO transfer. For the ISO scan mode, if you need to change the buffer size, print a buffer of the same size data first. By default, Buffer Size is set to 64000 when the test applet is launched. Change buffer Size to 64 before starting the test.

The Repeat Times for the loopback test controls the numbers of iterations of loopback, which is useful for debugging. By default, Repeat Times is set to 0 when the test applet is launched. To run the test infinite times, set Repeat Times to -1.

7. Testing control endpoints using standard USB compliance tool

To test control endpoints using the standard USB compliance tool:

1. Run the USB compliance tool.

The *USB Compliance Tool*^[1] window appears, as in [Fig 4](#).

2. Connect a USB peripheral.

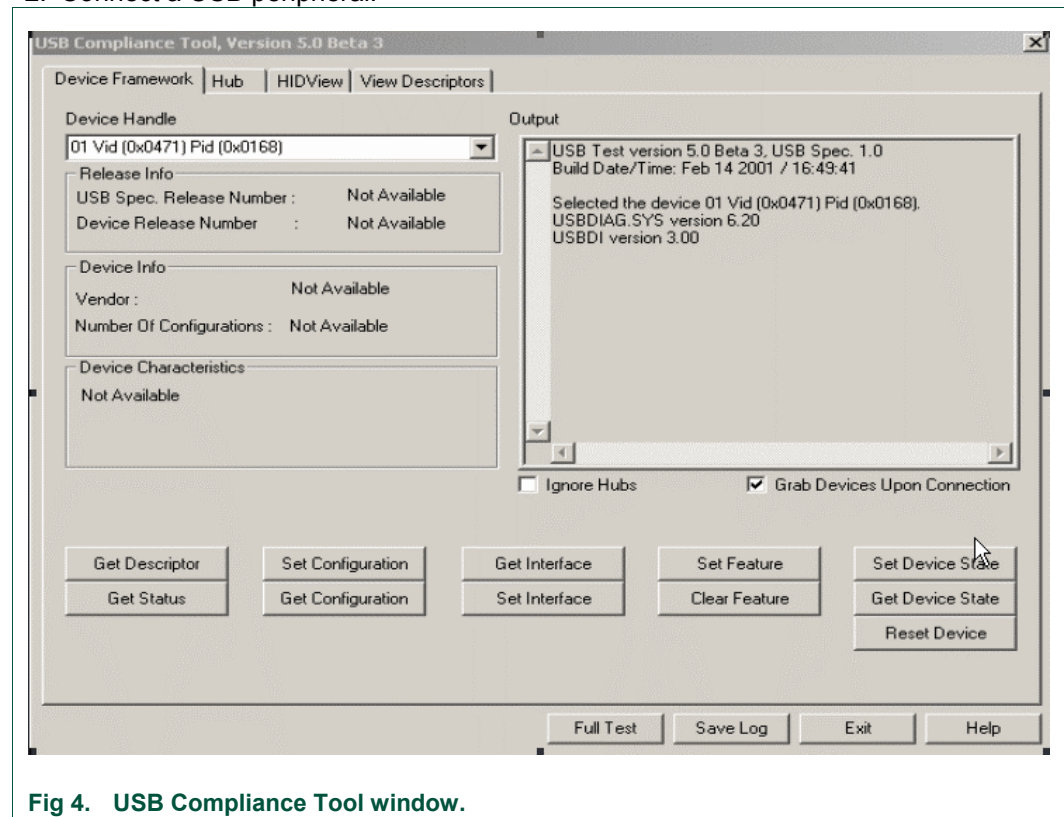


Fig 4. USB Compliance Tool window.

3. In the *USB Compliance Tool* window, click the **Full Test**^[2] button.

¹ In this document, names of windows and dialog boxes are indicated in *italic*.

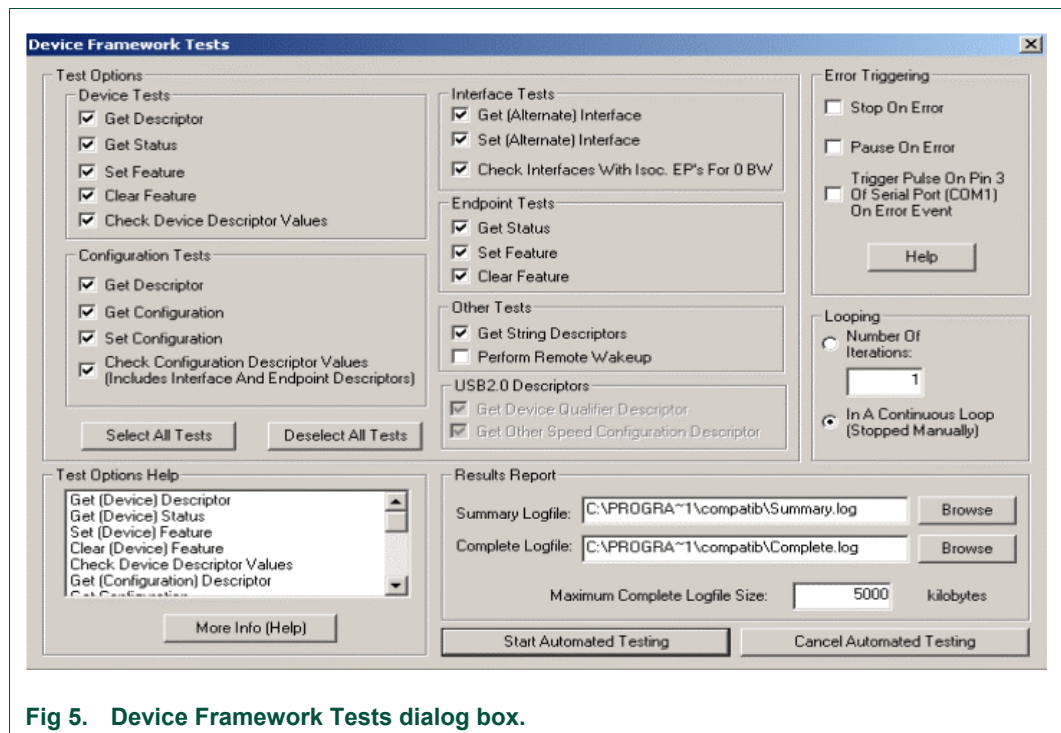


Fig 5. Device Framework Tests dialog box.

4. In dialog box *Device Framework Tests*, as seen in [Fig 5](#), deselect **Perform Remote Wakeup** and select **In A Continuous Loop**.
 5. Click the **Start Automated Testing** button.
- The *Full Test Results* dialog box appears, as seen in [Fig 6](#).
6. To stop the loop test, click **Stop Testing**.

² In this document, items that you click or type are indicated in **bold**.

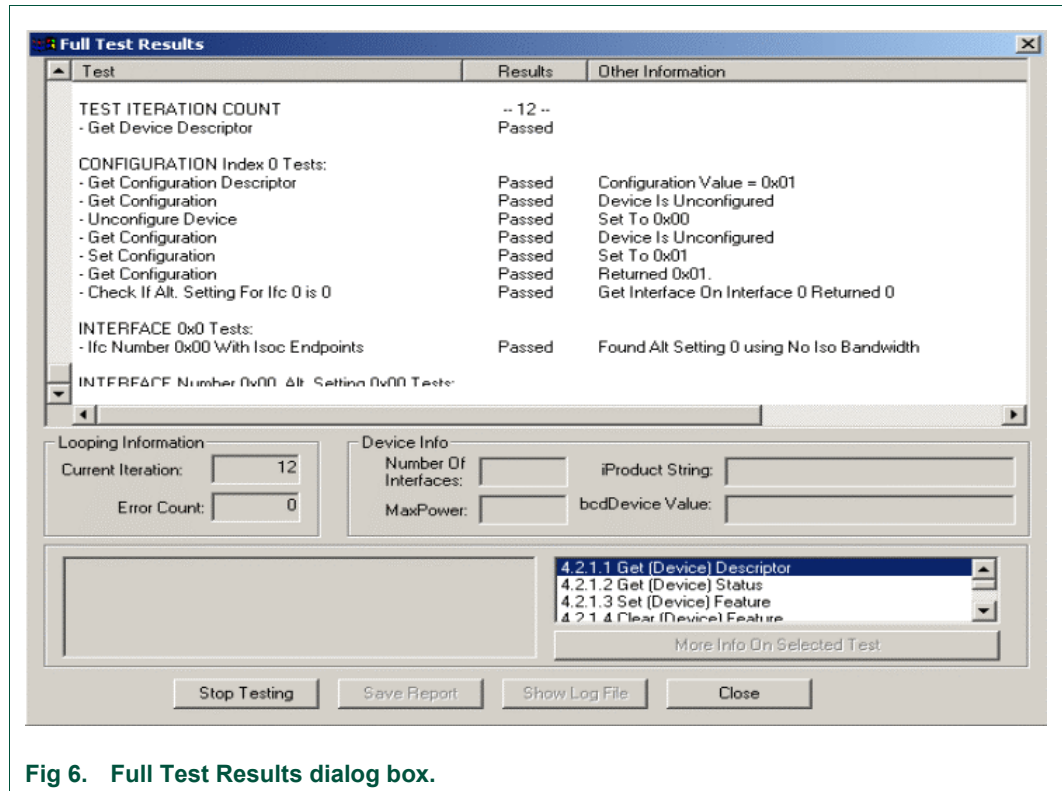
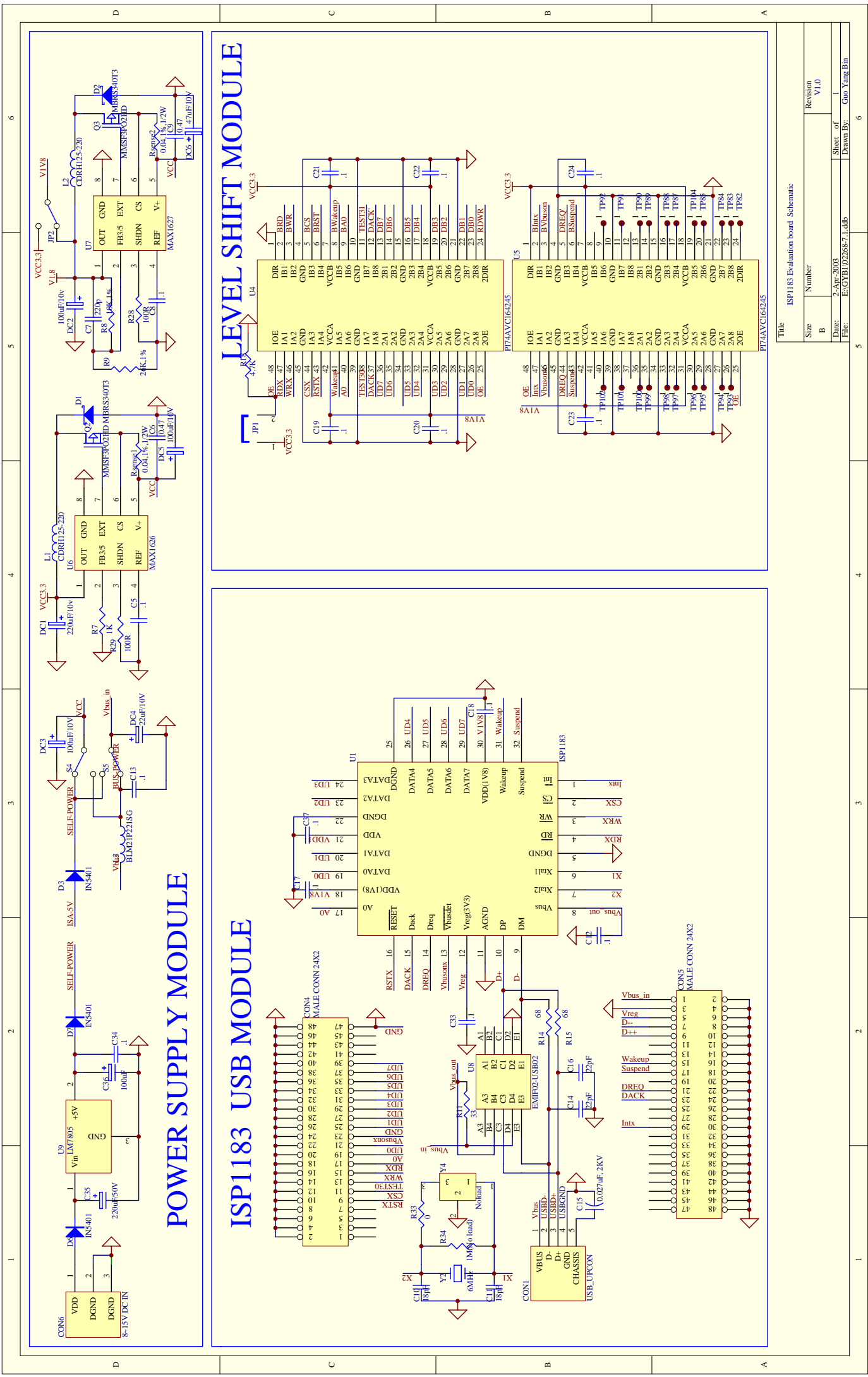


Fig 6. Full Test Results dialog box.

The USBCV testing tool can be downloaded from the www.usb.org website. Check the website for the latest version of the tool.

8. Schematics



Title: ISPI183 Evaluation board Schematic

Size: B

Number: 1

Date: 2-Apr-2003

File: E:\CYBI\02262671.ddb

Revision: V1.0

Sheet of: 6

Drawn By: Guo Yang Bin

9. Bill of materials

Table 10: Bill of materials

Used	Part Type	Designator	Footprint	Description
5		JP1 JP2 S2 S4 S5		Jumper
99		TP1 TP10 TP100 TP101 TP102 TP104 TP11 TP12 TP13 TP14 TP15 TP16 TP17 TP18 TP19 TP2 TP20 TP21 TP22 TP23 TP24 TP25 TP26 TP27 TP28 TP29 TP3 TP30 TP31 TP32 TP33 TP34 TP35 TP36 TP37 TP38 TP39 TP4 TP40 TP41 TP42 TP43 TP47 TP48 TP49 TP5 TP50 TP51 TP52 TP53 TP54 TP55 TP56 TP57 TP58 TP59 TP6 TP60 TP61 TP62 TP63 TP64 TP65 TP66 TP67 TP68 TP69 TP7 TP70 TP71 TP72 TP73 TP74 TP75 TP76 TP77 TP78 TP79 TP8 TP80 TP81 TP82 TP83 TP84 TP85 TP87 TP88 TP89 TP9 TP90 TP91 TP92 TP93 TP94 TP95 TP96 TP97 TP98 TP99		Test pad
1	0.027 μ F, 2KV	C15	1206	Capacitor polar
2	0.04,1%, 1/2W	Rsense1 Rsense2		
24	0.1 μ F	C12 C13 C17 C18 C19 C20 C21 C22 C23 C24 C25 C26 C27 C28 C29 C30 C31 C32 C33 C34 C37 C4 C5 C8	0805	Capacitor
2	0.47 μ F	C6 C9	0805	Capacitor
1	0R	R33		Resistor
2	0R	R19 R3	0805	Resistor
1	10 μ F/16V	C1	CASE_C	Capacitor polar
1	100 μ F	C36		Electrolytic capacitor
3	100 μ F/10V	DC2 DC3 DC5		Electrolytic capacitor
1	100K	R31	0805	Resistor
3	100R	R28 R30 R29	0805	Resistor
3	10K	R32 R4 R5	0805	Resistor
1	10K, 1%	R8	0805	Resistor
2	18pF	C10 C11	0805	Capacitor
6	1K	R1 R20 R21 R22 R23 R7	0805	Resistor
1	1M (No load)	R34	0805	Resistor (No load)
2	20pF	C2 C3	0805	Capacitor
1	22 μ F/10V	DC4		Electrolytic capacitor
1	220 μ F/10V	DC1		Electrolytic capacitor
1	220 μ F/50V	C35		Electrolytic capacitor
1	220p	C7	0805	Capacitor

Used	Part Type	Designator	Footprint	Description
2	22pF	C14 C16	0805	Capacitor
1	24MHz	Y3	CSX-750	
1	26K, 1%	R9	0805	Resistor
2	330R	R26 R27	0805	Resistor
1	33R	R11	0805	Resistor
3	3904	Q1 Q4 Q5		NPN transistor
3	4.7K	R18 R24 R25	0805	Resistor
1	47µF/10V	DC6		Electrolytic capacitor
2	68R	R14 R15	0805	Resistor
2	6MHz	Y1 Y2		Crystal
1	8~15V DC IN	CON6		DC-JACK
1	8K2	R2	0805	Resistor
1	AT62	CONN2		Gold finger
1	BLM21P221 SG	L3	1206	Inductor
2	CDRH125-220	L1 L2		Inductor
1	DIP40	U3	CDIP40	Microcontroller
1	EMIF02-USB02	U8	EMIF02-USB02	
1	FEMALE CON1X 10	CON3		Connector
1	HEADER 5X2	JP4		Connector
1	HEADER 6X2	JP5		Connector
3	IN5401	D3 D6 D7		Diode
1	ISP1183	U1		ISP1183
1	LED1	D5	LED	LED
1	LED2	D4	LED	LED
1	LM7805	U9	TO-3	
2	MALE CONN 24X2	CON4 CON5		Connector
1	MAX1626	U6	SO8	CMOS step-up switching regulators
1	MAX1627	U7	SO8	CMOS step-up switching regulators
2	MBRS340T3	D1 D2		Schottky diode
2	MMSF3PO2	Q2 Q3		

Used	Part Type	Designator	Footprint	Description
	HD			
1	No load	Y4	CN	
2	PI74AVC164 245	U4 U5	TSSOP48	Level shift
2	SW-PB	S1 S6		Push-button
1	USB_UPCO N	CON1	USB_UPCON	USB upstream connector
1	XC95144XL	U2	SQFP14X14-100 (N)	CPLD

10. References

- *ISP1183 Low-power Universal Serial Bus interface device with DMA data sheet*
- *Universal Serial Bus Specification Rev. 2.0.*

11. Disclaimers

Life support — These products are not designed for use in life support appliances, devices, or systems where malfunction of these products can reasonably be expected to result in personal injury. Philips Semiconductors customers using or selling these products for use in such applications do so at their own risk and agree to fully indemnify Philips Semiconductors for any damages resulting from such application.

Right to make changes — Philips Semiconductors reserves the right to make changes in the products - including circuits, standard cells, and/or software - described or contained herein in order to improve design and/or performance. When the product is in full production (status 'Production'), relevant changes will be communicated via a Customer Product/Process Change Notification (CPCN). Philips Semiconductors assumes no responsibility or liability for the use of any of these products, conveys no licence or title under any patent, copyright, or mask work right to these products, and makes no representations or warranties that these products

are free from patent, copyright, or mask work right infringement, unless otherwise specified.

Application information — Applications that are described herein for any of these products are for illustrative purposes only. Philips Semiconductors make no representation or warranty that such applications will be suitable for the specified use without further testing or modification.

12. Trademarks

Microsoft — is a registered trademark of Microsoft Corp.

Windows — is a registered trademark of Microsoft Corp.

SoundBlaster — is a registered trademark of Creative Technology Ltd.

13. Contents

1.	Introduction	3
2.	System requirements	3
3.	Jumper settings on the ISP1183 eval board	4
4.	I/O mapping	5
5.	Installing hardware, firmware, INF and driver	5
6.	Using the host applet	6
7.	Testing control endpoints using standard USB compliance tool	7
8.	Schematics	9
9.	Bill of materials	12
10.	References	14
11.	Disclaimers	15
12.	Trademarks	15
13.	Contents	16



© Koninklijke Philips Electronics N.V. 2004

All rights are reserved. Reproduction in whole or in part is prohibited without the prior written consent of the copyright owner. The information presented in this document does not form part of any quotation or contract, is believed to be accurate and reliable and may be changed without notice. No liability will be accepted by the publisher for any consequence of its use. Publication thereof does not convey nor imply any license under patent- or other industrial or intellectual property rights.

Date of release: 21 October 2004

Published in The Netherlands